

SCHULTE®

MID SIZE / SMALL ROTARY CUTTERS

XH-1500 • XH-1000 • FX-315 • FX-1800 • FX-1200 • FX-209 • FX-107



World Class *Built to Last*

schulte.ca

XH-1500 Rotary Cutter



Industrial Grade Heavy Duty Rotary Cutter

New, extra heavy duty, high horsepower Bondioli gearboxes with new oil level sight glass and 1-3/4" input shafts and 3" (75mm) output shaft. Extra heavy duty Bondioli G8 drivelines.

New high-torque wing clutches ensure better performance in rough cutting.

Fitted with replaceable spring steel bushings at all major pivot locations to increase the ease of maintenance and life of the machine.

New locations include the pivot points on the hitch, tension links, center suspension, wing suspension and all wheel standards.

Single domed, sweep clean deck design eliminates excess weight over competitive double-deck designs, eliminates build up of debris and prevents rusting on top side of deck.

Tandem walking axles result in smooth operation over rough surfaces. A deep cutting chamber coupled with high blade tip speeds result in a superior cut & unsurpassed material flow.

24" severe duty tires, transport height is increased to 17.5" along with improved performance in wet conditions.

Lower pressure 8" stroke hydraulic phasing cylinders for a level lift.

Low maintenance CV Tractor Shaft or patented 540rpm Equal Angle Hitch available.

Center suspension reduces stress on tractor drawbar

3/8" thick formed deck protection rings prevent blade to deck contact. Double safety chains with individually replaceable links are standard equipment.



XH-1000 configuration

Patent pending Pentagon Blade Bolt design with replaceable bushings. Flat 1" thick blade bar design with heavy duty bracing.



Compatible with Schulte FLX-1510 Flex Arm



FX-315 Rotary Cutter

Ultimate Cutting, Shredding and Material Distribution

Residue Distribution Tailboard ensures maximum distribution while maintaining a safe working environment.

Heavy duty drive package includes 260hp splitter box and 225hp* right angle boxes. **Based on intermittent use*

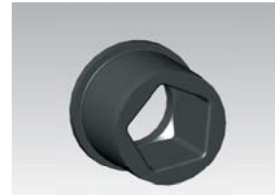
Single domed, sweep clean deck design eliminates excess weight over competitive double deck designs, reduces build up of debris and prevents rust from moisture.

New patent pending replaceable deck ring.

The Speed leveling system minimizes setup and switch over time for front to back leveling to accommodate different draw bar heights from tractor to tractor. 13 3/8" frame depth & increased blade tip speeds for superior cutting and flow material.

1/2" x 4" super suction blades leave nothing behind.

Variable Position Shrouding allows you to change material flow underneath your cutter to maximize shredding and distribution.



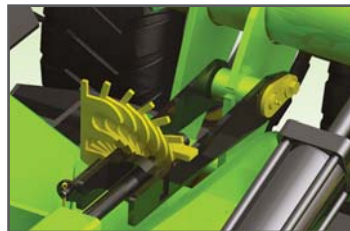
Pentagon blade bolt for maximum protection



In wheat straw



Forward mounted slip clutches



Speed leveling system



Bolt in spindles



Center suspension



Residue Tailboard for Maximum Distribution

FX-1800 Rotary Cutter



Legendary Schulte Tough, Economically Priced

A single domed 7ga continuously welded deck makes the cutter extremely easy to clean, prevents water pooling and rusting and helps shed debris.

6.5 " blade overlap and high blade tip speeds.

A four gearbox driveline with independent slip clutches. The FX-1800 utilizes heavy-duty and extremely reliable Bondioli gearboxes.

An 80° CV shaft allows for smooth power transmission during tight turns. The CV for 540rpm is a category 6 and for 1000 rpm is a category 5. The driveline on the cutter itself employs self-adjusting friction clutches to protect your investment and always operate at peak performance. All clutches are located under the main shield for ease of service.

Spun formed 7ga stump jumpers (Round skid pans) ensure durability and balance.

Deck protection rings are standard on the FX-1800 and FX-1200 and protect the cutter deck from rising blades.

Available in fixed knife configuration for crop residue.

Compatible with Schulte FLX-1510 Flex Arm.



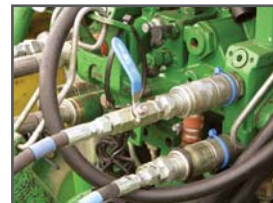
FX-1200 configuration



Outboard blade rotation keeps material from balling up under the deck



Single center lock up system



Ball valve wing lock up system



7ga single domed deck

Pan Unit Shown



FX-209 Rotary Cutter

2 Rotor, 7 Gauge Domed, Single Deck Push / Pull Design

The FX-209 is equipped with push or pull capabilities for the ultimate in versatility and convenience.

Rigid single domed 7ga deck construction provides extra strength and durability, a trademark of Schulte cutters.

A two rotor base unit is common to all configurations.

Pull type, 3pt, semi mount and semi mount swing hitching options. Pull type unit has the ability to accept open clevis, solid tongue, adjustable clevis or precision hitch options.

Four tire options for the FX-209 include solid laminate, severe duty, severe duty foam filled or forklift tires.

Available in 540 and 1000rpm drive options.

9ft / 3m overall width.

Heavy duty gearboxes and G8 drivelines.



Deck Protection Rings



Height adjustment



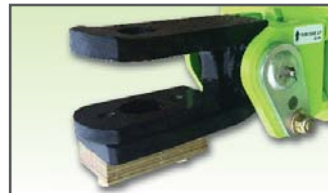
Gearbox



Precision hitch



3pt hitch



Open clevis hitch



Trailing hitch



FX-107 Rotary Cutter

7 Foot Wide, Single Rotor, Domed Deck Cutter



Rigid single domed 7ga deck construction

Pull type and 3pt hitching options

Base unit common to all configurations

Larger, more durable pan

Double safety chains standard front and rear on all units

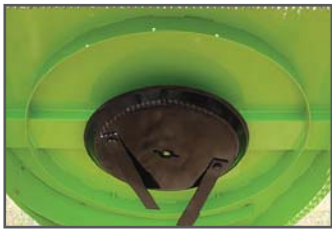
540rpm drive

Heavy duty gearbox and driveline, the same units as on our large cutters

Pull type unit accepts open clevis, solid tongue, adjustable clevis or precision hitch options

Tire options: solid laminate, severe duty, severe duty foam filled or forklift tires

1/2" x 3" deck protection ring guards against blade to deck damage



Deck Protection Ring



Precision hitch



Open clevis hitch



Adjustable clevis hitch



Solid tongue hitch



Replaceable skid shoes



Heavy duty gearbox, the same unit as on our XH-1500 Series 3 industrial grade cutter

3pt Hitch Shown



Fixed Knife Option

Optional Fixed Knife Units for Excellent Shredding & Distribution

The optional fixed knife system is available on all of Schulte's mid sized cutters for unparalleled stalk and straw shredding and spreading. The shredding action of a fixed knife mower aids in faster decomposition of the material in the fields.



FX-315 fixed knife layout



FX-1800 fixed knife unit mulching crop



FX-318 fixed knife unit in cattails



FX-315 fixed knife unit in corn

FLX-1510 Flex Arm

Schulte Flex Arm Shown with XH-1500



Specifications

SPECIFICATIONS

Cutting Width
Overall Width
Overall Length
Cutting Height
Transport Width
Row Crop Wheel Trans. Width
Transport Height
Weight
Hitch Weight
Cutting Capacity
Minimum Tractor Size
Blade Tip Speed
Center
Wing
Blade Tip Speed
Center
Wing
Blade Overlap
Divider Gearbox Rating
Center & Wing Gearbox Rating
Deck Thickness
Side Skirt Depth & Thickness
Wing Working Range
Wing Floating Range



XH-1500

15' (4.57m)
15.8' (4.83m)
16' (4.88m)
1.5"-17.5" (38mm-444mm)
88" (2.24m)
-
88" (2.24m)
5,800lbs (2631kg)
1,900lbs (864kg)
4" (102mm)
65hp (52kw)
540rpm
15,493 ft/min (4874m/min)
15,991 ft/min (4722m/min)
1000rpm
15,743 ft/min (4884m/min)
16,022 ft/min (4798m/min)
6.5" (165mm)
260hp (194kw)
225hp (168kw)*
.187" (7ga or 4.6mm)
-
25° down to 90° up
-



XH-1000

10.5' (3.20m)
11.5' (3.53m)
16' (4.88m)
1.5"-17.5" (38mm-444mm)
88" (2.24m)
-
88" (2.24m)
5,200lbs (2364kg)
1,700lbs (773kg)
4" (102mm)
50hp (45kw)
540rpm
15,493 ft/min (4874m/min)
15,991 ft/min (4722m/min)
1000rpm
15,743 ft/min (4884m/min)
16,022 ft/min (4798m/min)
6.5" (165mm)
260hp (194kw)
225hp (168kw)*
.187" (7ga or 4.6mm)
-
25° down to 90° up
-



FX-315

15' (4.57m)
15.8' (4.83m)
16.5' (5.03m)
.625"-17.5" (16mm-444mm)
99" (2.5m)
-
84" (2.13m)
5,665lbs (2569kg)
2,120lbs (962kg)
3.5" (89mm)
65hp (49kw)
540rpm
15,980 ft/min (4871m/min)
15,459 ft/min (4711m/min)
1000rpm
15,974 ft/min (4869m/min)
15,708 ft/min (4788m/min)
6.5" (165mm)
260hp (194kw)
225hp (168kw)*
.187" (7ga or 4.6mm)
-
25° down to 103° up
25° down to 40° up



FX-1800

15' (4.57m)
15.8' (4.83m)
16.8' (5.13m)
1.75"-16.75" (45mm-425mm)
93" (2.36m)
-
84" (2.13m)
4,653lbs (2069kg)
1,702lbs (772kg)
4" (101mm)
50hp (37kw)
540rpm
15,980 ft/min (4871m/min)
15,459 ft/min (4711m/min)
1000rpm
15,974 ft/min (4869m/min)
15,708 ft/min (4788m/min)
6.5" (165mm)
260hp (194kw)
225hp (168kw)*
.187" (7ga or 4.6mm)
13.6" (346mm)
25° down to 90° up
25° down to 30° up



FX-1200

10.5' (3.20m)
11.4' (3.48m)
16.8' (5.13m)
1.75"-16.75" (45mm-425mm)
93" (2.36m)
-
84" (2.13m)
4,313lbs (1956kg)
1,602lbs (727kg)
4" (101mm)
45hp (34kw)
540rpm
15,980 ft/min (4871m/min)
15,459 ft/min (4711m/min)
1000rpm
15,974 ft/min (4869m/min)
15,708 ft/min (4788m/min)
6.5" (165mm)
260hp (194kw)
225hp (168kw)*
.187" (7ga or 4.6mm)
13.6" (346mm)
25° down to 90° up
25° down to 30° up

*Based on intermittent use

SPECIFICATIONS

Cutting Width
Overall Width
Overall Length
Cutting Height
Transport Clearance
Weight - Trailing
3pt
Semi mount
Semi mount swing
Cutting Capacity
Minimum Tractor Size
Blade Tip Speed - 540rpm
1000rpm
Blade Overlap
Gearbox Rating Outboard
Deck Thickness
Side Skirt Depth & Thickness
Hitch Type
Tractor PTO Speed
Deflectors



FX-209

9' (2.78m)
9.7' (2.96m)
13.5' (4.1m)
2"-13" (51mm-330mm)
11.5" (29.2cm)
2400lbs (1088kg)
2300lbs (1043kg)
2100lbs (952kg)
2860lbs (1297kg)
3" (7.6cm)
50hp (37.3kw)
17086fpm
7355fpm
4.75" (121mm)
210hp (157kw)
7ga (3/16", 4.6mm)
1/4" x 13.75" (6.35mm x 337mm)
Cat. II & III 3pt, semi mount swing (13" left or right swing), trailing pull
540rpm or 1000rpm
Double chain front and rear



FX-107

7' (2.13m)
7.9' (2.43m)
14.5' (4.41m)
3"-12 7/8" (76mm-330mm)
10.5" (26.7cm)
2010lbs (912kg)
1980lbs (898kg)
-
3" (7.6cm)
50hp (37.3kw)
17086fpm
-
4.75" (121mm)
210hp (157kw)
7ga (3/16", 4.6mm)
1/4" x 13.75" (6.35mm x 337mm)
Cat. II & III 3pt, Cat. II quick hitch, trailing pull
540rpm or 1000rpm
Double chain front and rear

OPTIONS - XH-1500 / XH-1000

540rpm Equal Angle hitch • Precision hitch • precision clevis hitch • Standard clevis hitch • 540rpm or 1000rpm drive packages • Severe duty tires • Foam filled severe duty tires • Solid laminated tires • Forklift tires • Towing hitch kit • Manual winch kit • Spool valve kit • Shredder blade kit • Wing walking axles • Safety lighting kit • Optional rubber guard kit for front edge & tool box kit.

OPTIONS - FX-315

The FX-315 can be equipped with stump jumpers or the Schulte exclusive Fixed Knife System • Forklift, aircraft or laminate tires • Optional double chains front and rear • Full belting front and rear • Residue distribution tailboard or a combination there of • Optional 540rpm Equal Angle Hitch • 540rpm or 1000rpm CV driveline • Deck protection rings and variable position shrouding • Safety light kit.

OPTIONS - FX-1800 / FX-1200

Center walking axles • Through axles • Fixed knives • Aircraft tires • Solid laminated tires • Forklift tires • 4, 6 or 8 tire options • Single or double safety chains front and rear • Safety light kit • Standard clevis • Adjustable clevis • Precision hitch (Eliminates drawbar wear) • Solid tongue • Shredder blade kit • Equal Angle Hitch - Non CV drive 540rpm only • Tension Link • Leveling rod (Addition of second rod) • Strut mount for Flex Arm (Factory or field installed)

SCHULTE

Schulte Industries Ltd.

PO Box 70, Englefeld, SK Canada S0K 1N0

Ph (306) 287-3715 Fx (306) 287-3355

Email info@schulte.ca Web www.schulte.ca



Sold By:

Printed in Canada

Prepared by NELSON GRAPHIC DESIGN

201712

Schulte is a registered trademark of Alamo Group Inc. Schulte Industries Ltd. reserves the right to change the design and specifications of its products without notice. Illustrations may include optional equipment and accessories, and may not include all standard equipment.

